

# March 2011 YLOA/YSPUC GM Report, as of 3/17/2011

## Projects in review or underway for 2011:

- **YSPUC new building/location construction:** reviewing two designs, both include YLOA administrative offices within the new Water Company building
- **Solar or Wind programs for electricity generation** (YSPUC and YLOA): reviewing locations for a meter/feedback project with YLOA (clubhouse) and YSPUC (tank/station)
- **Golf Course path paving:** current pricing requires I find additional \$10K from other capital projects or savings. Planned for early March/late Feb, as soon as weather permits
- **Walking paths on major streets in YLOA** (Coral Dr., Long Hollow, and Revis Rd.): initial planning involves one-side 4ft pedestrian path, using in-place materials and coverings to culverts
- **Recreational Center development:** working with committee for details to master plan, design drawing, and permits
- **Mainline replacement** work, estimated 5,900 L.F.: work planned at Quail Court and Long Hollow location.
- **Nursery green** at Golf course maintenance yard: design in review with contractor.
- **Beautification at Equestrian Center:** initial plans discussed with committee chair.
- **YSPUC CDPH Brown Water Waiver:** Ken is working with a third party to collect the questionnaire cards from the last survey (needed for both the Waiver and another project).
- **Café renovation** (interior paint and carpet, exterior paint, landscape, porta-potty, bathrooms): Completed vinyl repairs for 5 booths.

---

## Administration/A.R.

- **A/R Collections Project:** March's target is \$18,000.

## Chukchansi/Madera County Grants:

We have submitted three grant requests to the Madera County/Chukchansi 2011 Grant Program. They cover requests for the construction of new amenities/services at our Recreation Center, and are included in our master plan for the Recreation Center Development Program. The grant requests addressed partial matching costs submittals for an Off-Leash Dog Park, BMX Track, and Soccer Field. We were deemed to be ineligible for the Chukchansi program last year. This year, we have higher hopes for some level of award.

## Community Events:

- We had approximately 150 people come to hear the March 7 "Wildlife in YLP" presentation by Fish & Game, sponsored by YLOA Security, Ladies of the Lake, the Equestrian Committee, and the Golf Committee.
- **Madera County job fair** – Was held on Thursday March 10, 2011 at the Oakhurst Community Center. We attended and had a table at the event. There were approximately 200 attendees seeking jobs. We received several applicants for YSPUC's open positions.
- **Eagle Scout Projects** – The benches for the Blue Heron lake trail have been installed. The volley ball court project is waiting for final approval from the Scouts before he can proceed.

## Upcoming Events:

- *April 14<sup>th</sup> Realtors Luncheon*  
*Informational Luncheon to encourage the Realtors to sell at Yosemite Lakes Park.*
- *April 30<sup>th</sup> Clean-up the Park Weekend*
- *Thursday April 7<sup>th</sup>, 14<sup>th</sup>, 21<sup>st</sup> American Idol Night*  
*Yosemite Lakes Park resident Sara Balls nephew is in the top 12.*

## Signage at Clubhouse Drive (Blue Heron Restaurant sign):

# March 2011 YLOA/YSPUC GM Report, as of 3/17/2011

We have marked and oriented the sign placement. We have contacted the homeowner and the homeowner approved the placement of the sign. ECC has approved the sign and placement. The sign is backlit. We have chosen the color of the sign – Hyper Blue. We seek committee sponsors for the construction of the sign (donations.) Maintenance estimates \$400 for the placement of a concrete pad for the sign. The current cost for the sign is \$5,700 delivered. This estimate does not include electrical installations

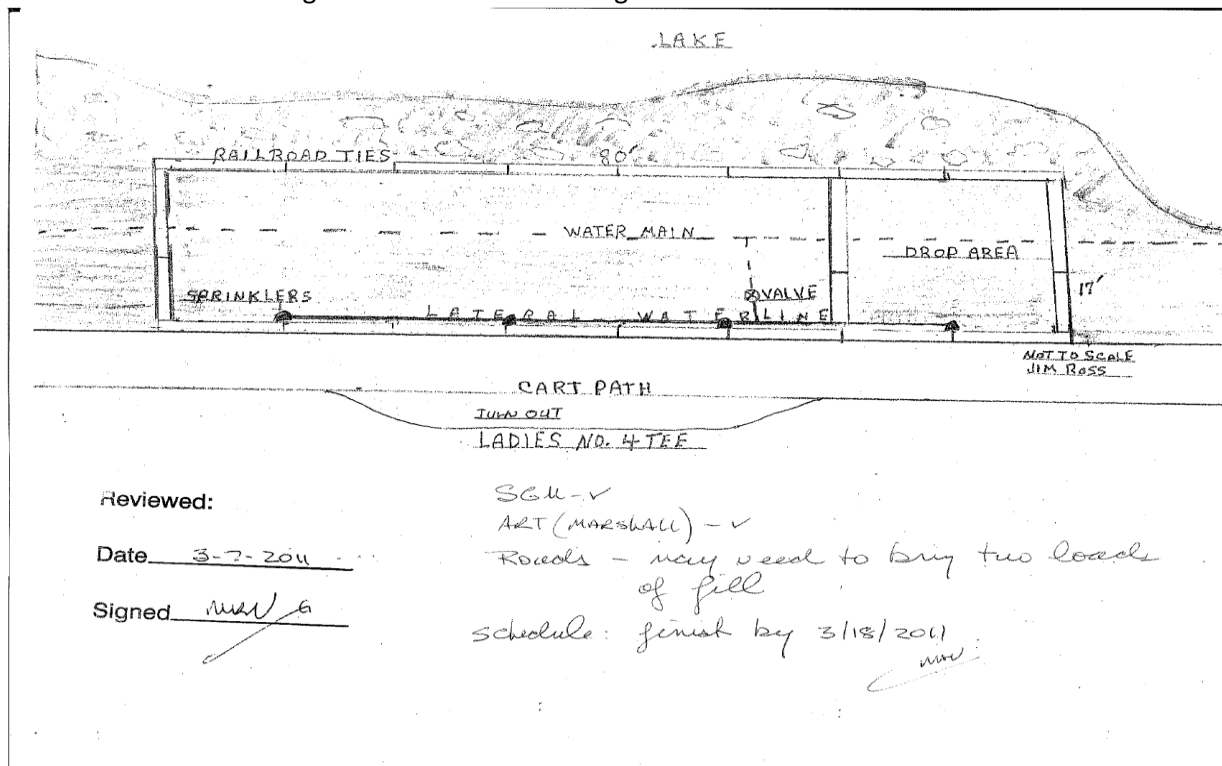
**Madera County reorganization meetings:** Madera County has not released their final recommendation as they are still studying all configurations

## IT Department status (Patti Bisnett)

- Gatekeeper LMS (payroll software): Continued payroll training including government agency reporting and payment processing, tax forms, labor allocation, journal entries, processed second payroll in new software on Feb 1.
- One-Call Now Database – Continued membership updates.

## Golf

The Golf Committee and their volunteer team are renovating the Ladies #4 Tee, per our list of 2011 Projects. The work involves moving a water line and installing railroad tie barriers for the Tee box.



## SIGN-INS FOR GOLF @ YLP, Recap for the Month of February 2011

CATEGORY	MONTHLY	ANNUAL	DAILY	GUEST	TOTAL
SUNDAY	31	40	15	12	98
MONDAY	29	84	12	1	126
TUESDAY	51	8	8	3	70
WEDNESDAY	31	69	3	0	103
THURSDAY	46	20	15	3	84

## March 2011 YLOA/YSPUC GM Report, as of 3/17/2011

FRIDAY	36	55	9	4	104
SATURDAY	35	32	17	3	87
After Hours	0	6	0	0	6
TOTAL	259	314	79	26	678
% of Total	38	46	12	4	100
2/11 vs. 2/10	(+28%)	(+13%)	(-8%)	(-34%)	(+12%)
RENTALS		2/2010	2/2011		
Electric carts		24	21		
Hand cart		4	3		
Golf clubs		1	0		
Rain-out days = 2					
Data provided by: Art Werner, Head Marshal					

### Rec Ctr/Pool Report (written by Kathy Casey)

**Rec Center:** The VIP cards and the Token program are being used at both the Café and the Restaurant. Little League first game is Saturday the 12<sup>th</sup> with games running all day. Little League opening day will be on the 26<sup>th</sup> of March; they moved the event to Minarets high school as they felt that they needed more space to host the large turnout expected. The VIP fundraising cards currently being sold by Little League include specials for both Fairway Café and the Blue Heron Restaurant. The VIP cards are a nationwide program that can be used anywhere. Once the card is purchased the user can go online enter in the zip code of their current location and find all the businesses offering specials. The Fairway is offering “buy one entre and receive a free child meal”. The Blue Heron is offering free dessert with the purchase of one entre. An additional program allows Little League to earn light tokens buy eating at both restaurants. With every \$25 supporters spend at the restaurants Little League earns a \$5 token good for 1 hour of lights.

**Dugout:** The after school traffic is picking up at the Dugout/Rec center; the daily numbers are increasing, with Wednesday continuing to be our busiest day.

**Recycle Center:** March sponsor of the Recycling center will be Little League.

**Equestrian Center:** The Back country Horseman will host a riding event on Sunday March 27<sup>th</sup>. They will utilize the parking lot of the Rec Center as well as the Barn to park trailers and will be using the lake trail.

We currently have 13 open stalls and 20 occupied stalls. The first show of the buckle series begins on Mother’s day in May.

**Pool:** The new showers are currently being installed in both the men’s and women’s restrooms.

### F&B January 2011 Events

- **Valentine’s Day** – Valentine’s Day fell on a Monday and we decided to keep the restaurant open. We offered a three course menu with two entrée choices (Lobster Tail and Prime Rib) and our regular menu. We had over 100 guests. The event was well received with requests to do this again soon. I think we will keep this format for next year’s Valentine’s Day.
- **Sunday Tacos** – The change from Monday to Sunday has caught on. Our taco sales are about \$400.00 to 500.00, the bar sales between \$250.00 and \$450.00. This is less than on Monday Nights during football season but I think we will build this up further.
- **Special live music** with Dave Henderson and Tri Tip Buffet: We offered a \$12.00 Tri Tip buffet on February 26 from 7 to 9 pm. The event was well attended; we sold about 50 Tri Tip buffets on top of our regular dinner.

## March 2011 YLOA/YSPUC GM Report, as of 3/17/2011

- **Super Bowl** – We offered our regular taco menu on Super Bowl Sunday. Turn-out was disappointing.
- **Laugh Out Loud Comedy Show** – March 19<sup>th</sup>.
- **St. Patrick's Day Buffet** – We'll offer a \$9.95 Corned Beef and Cabbage Buffet. A week before the event we have only reservations for 11. We are expecting about 80.
- **German Buffet** – The German Club approached us about doing another German Buffet. We will do this on March 26 for \$12.95. This is open to the public. We also will offer our regular menu.
- **Upcoming Event planning:** we are working on items including Art and Wine, American Idol Night (with news coverage), St. Patrick's Day Buffet, Realtor Luncheon.
- **Miscellaneous** – We still offer Karaoke on Wednesday and Beer for a Buck on Thursdays. We will be changing the Clubhouse foyer furniture in the near future, revising our Wedding pamphlet, and developing new formats for our Comment Cards.
- **We hired Cynthia Lyman** as our new banquet sales person. She has already sold 4 events. Our banquet sales are ahead of last year. This year we will increase our banquet business.
- We are reviewing our banquet prices. We need to seriously consider raising our prices.
- We did F&B evaluations in February.
- We'll have a Realtors Lunch on *April 14<sup>th</sup>*
- *Thursday April 7<sup>th</sup>, 14<sup>th</sup>, 21<sup>st</sup> American Idol Night: YLP resident Sara Balls nephew is in the top 12.*
- *Wednesday April 6<sup>th</sup>, 13<sup>th</sup>, 20<sup>th</sup> and 27<sup>th</sup> Karaoke Night*

### Café:

#### Promotions:

- \$5 Specials in effect Monday through Wednesday: this promotion is popular, increasing sales on slow days by approximately \$100 to \$200 daily.
- VIP Cards w/ Yosemite Little League- bearers receive free children's meal w/purchase of regular menu item.
- Tokens for Yosemite Little League patrons can specify their sales to go towards donations of tokens from YLOA. We have received positive feedback on this one.
- Senior Menu available every day.
- Uniform discounts for Police/ Fire Department when in uniform. (50 % off )
- Red Hat Ladies every Friday: Usually between 8 and 20 people.

#### Renovation Project & Maintenance:

We are collecting estimates on paint, carpet, window shades and rain gutters. We are reviewing uniform options, to replace current inventory that is worn and faded.

**Advertising:** We have renewed our sign at the Recreational Center for Yosemite Little League, and have an ad in the Yelp's March edition.

---

### YSPUC MANAGER REPORT:

Written by Ken Harrington, Company Operator

#### (Covers time period of February 1<sup>st</sup> thru 28<sup>th</sup> 2011)

**Tanks:** During the February period, we experienced 12 days where one or more of our storage tanks fell below the 75% fill level. The detail is as follows:

**Tank #1** – Total of 0 days

**Tank #2** – Total of 8 days – Operational Decisions

**Tank #3** – Total of 4 days – Mainline failure on Running Deer Drive

**Tank #4** – Total of 2 day - Operational Decisions

At no time during the month did any storage tank fall below 50% capacity.

## March 2011 YLOA/YSPUC GM Report, as of 3/17/2011

**(Covers time period of February 1<sup>st</sup> thru 28<sup>th</sup> 2011)**

**Production for February 2011** was approximately 11.29MG as compared to approximately 12.89MG for 2010, representing a decrease in production of approximately 1.6MG. A comparison of the weather between February 2010 and February 2011 (using a private weather station located in YLP) shows that the average temperature in 2010 was approximately 7.5° lower during the month than in 2010. Rainfall in 2010 was 1.68inches while 2011 was higher at 4.45 inches. Water used for flushing the system and fire department training activities accounted for 24,660 gallons in 2010 (6,925 gallons used for fire hydrant maintenance operations – 17,735 used to address customer complaints) compared to 459,038 gallons in 2011 (14,075 gallons used for fire hydrant maintenance operations – 72,312 gallons used to address customer complaints and 372,651 flushed in response to the main break of running Deer Dr.).

*\* Please note that the production numbers listed above include the discrepancy found to exist in the Well 40A at the MTBE treatment plant. I had hoped to have this issue fully resolved by the March Board meeting but have been delayed by operational issue at the MTBE Treatment Plant and other higher priority work.*

**(Covers time period of February 1<sup>st</sup> thru 28<sup>th</sup> 2011)**

### **Well Status:**

**Well 1A (YSP & Corral Dr. North end):** This well is functioning properly and there are no concerns to report at this time. This well is operated during the month on an as needed basis. During February, this well was operated for 28 out of 28 days producing 2.92M gallons.

**Well 1E (YSP & Cavestone Ct):** This well is functioning properly and there are no concerns to report at this time. There is no additional new information to report at this time. This well is operated during the month on an as needed basis. During February, this well was operated for 0 out of 28 days.

**Well 28B (YSP & clubhouse drive):** There is no additional new information to report at this time. This well is operated during the month on an as needed basis. During February, this well was operated for 0 out of 28 days.

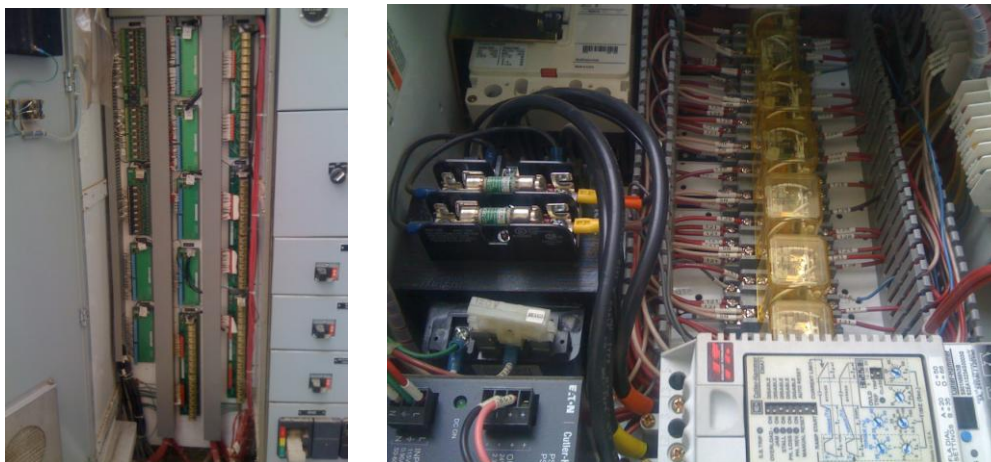
**Well 31A (Ranger Circle Dr. North of Revis Rd):** Recently we have been working to repair erosion damage due partially to the rains earlier this season. Retaining walls have been installed and fill dirt added to restore grades and help guard against future damage. This well is operated during the month on an as needed basis. During February, this well was operated for 0 out of 28 days.

**Well 35A (Ranger circle dr. @ Revis Rd):** No new information to report at this time. This well is operated during the month on an as needed basis. During February, this well was operated for 0 out of 28 days.

**Well 36A (Long Hollow Ct. North):** This well is functioning properly and there are no concerns to report at this time. This well is operated during the month on an as needed basis. During February, this well was operated for 18 out of 28 days producing 1.15M gallons.

## March 2011 YLOA/YSPUC GM Report, as of 3/17/2011

**Well 37A, Well 40A (MTBE Treatment Plant):** As reported last month, we had experienced some operational problems concerning the backwash process. I am currently unable to engage the backwash pump. Additional time was devoted in February to finding the problem with no success. On March 8<sup>th</sup> we again tried to track down the source of the problems and called for assistance from Gleim Crown Pump. Through trial and error we located the problem, a loose control wire that was keeping the backwash pump from being allowed to operate. Below I have added a couple of photos to show a portion of the wiring we had to trace in order to find this one loose wire. The backwash process was completed on March 9<sup>th</sup> and we are now letting the vessels rest for testing on Monday, March 14<sup>th</sup>. I am hopeful that these tests will come back clear which will allow us at that time to bring the treatment plant back on line. I am not anticipating any problems concerning these tests. During February, Well 37A was operated for 0 out of 28. During February, Well 40A was operated for 0 out of 28 days.



**Well 39A (Outlot D Fire Road off Revis Ln East):** This well is functioning properly with no concerns to report. This well is operated during the month on an as needed basis. During February, this well was operated for 0 out of 28 days.

**Well 42A (Outlot D Fire Road off Revis Ln East):** This well is functioning properly with no concerns to report. We have performed some vegetation management at this location but will be contacting PG&E due to trees grown into the incoming power lines supplying this well. During February, this well was operated for 16 out of 28 days producing 1.48M gallons.

**Well 44A (Outlot H Long Hollow Ct. North):** This well is functioning properly with no concerns to report. This well is operated during the month on an as needed basis. This well is a very low producing well at only about 5 to 7 GPM. It cost more in power, chemicals, and labor to run this well than the amount we bill for service. Because of this, we typically do not operate Well 44A unless overall production necessitates. We maintain its status with the state because it provides us with water credit towards our system requirement. During February, this well was operated for 0 out of 28 days.

**Well 45A (Outlot D, end of Blue Heron):** This well is functioning properly with no concerns to report. This well is operated during the month on an as needed basis. During February, this well was operated for 14 out of 28 days producing 1.02M gallons.

## March 2011 YLOA/YSPUC GM Report, as of 3/17/2011

**Well 47A (YSP, North of Revis Rd):** No new information to report at this time. This well is operated during the month on an as needed basis. During February, this well was operated for 31 out of 31 days producing 834,900 gallons.

**Well 48A (North Dome Dr. near North Dome Ct.):** No new information to report at this time. This well is operated during the month on an as needed basis. During February, this well was operated for 0 out of 28 days.

**Well 49A (Parking lot at Golf Course):** This well is functioning properly with no concerns to report. Test results from recent in-house testing for iron show that the iron levels are far lower than we were experiencing last summer. I believe that the additional well development was beneficial in reducing these levels. We will have to see how things progress as we move through the summer months in order to determine if the problem is completely corrected. This well is operated during the month on an as needed basis. During February, this well was operated for 0 out of 28 days.

The following wells are not currently listed on our permit as available. Their status is:

**Well 11A (OFS Date 09-12-01)** – Ordered off to due to MTBE contamination.

**Well 18A (OFS Date 09-12-01)** – Ordered off due to concern of spreading MTBE contamination.

**Well 29A (OFS Date 05-19-01)** – Ordered off due to fecal bacteria contamination.

**Well 38A (OFS Date 08-09-04)** – Placed on standby status due to failed pump and motor and possible uranium concerns. This well does not produce enough water to warrant the repair expense at this time.

**Well 41A (OFS Date 03-31-04)** – Placed on standby status due to failed pump and motor and subsequent well collapse after pump was pulled.

**Well 46A (OFS Date 06-06-05)** – Ordered off due to uranium contamination.

### **Boosters:**

**Upper John Muir Booster:** There is no additional new information to report at this time.

**Hydro-Pneumatic Booster:** There is no additional new information to report at this time.

**Booster 2D:** There is no additional new information to report at this time.

Currently, all other boosters are functioning properly with no concerns to report at this time.

**(Covers time period of February 1<sup>st</sup> thru 28<sup>th</sup> 2011)**

### **Operational Items/Misc:**

#### **Repairs:**

- Total leaks repaired from February 1<sup>st</sup> thru 28<sup>th</sup>: 4, with a YTD of 13. The 2010 year comparison is 2, with a YTD of 5
- Main Repairs: 4 for the period, with YTD of 6. The 2010 year comparison for the like period is 2, with a YTD of 2.
- Service Lines: 0, with a YTD of 7. The 2010 year comparison is 0, with a YTD of 3. *(Please note, in last month's report I inadvertently listed the 2010 comparison of service line repairs for 2010 as "0" when it fact is should have been listed as "3")*

Pro-active repair work from February 1<sup>st</sup> thru 28<sup>th</sup>: 0 with a YTD of 2. The 2010 year comparison for the like period is 0 with a YTD of 0.

## March 2011 YLOA/YSPUC GM Report, as of 3/17/2011

In February, there were 4 main repairs made during the period. One main repair was for a minor crack and was repaired with a repair clamp. There was one mainline failure that required the replacement of 7'8" of mainline piping. The remaining two repairs, although listed in the "Mains" category, were in fact repairs to leaking gate valves on end-line blow-offs. Since the blow-offs are considered part of the mains, they are listed in this category. There were no service line repairs made during the February period.

There are currently no known active leaks.

There have not been any water meters set so far in 2011.

**Annual CPUC Report:** The forms for the Annual CPUC Report have arrived and I have downloaded the electronic copies from their website. I have also begun filling out this report. The largest portion of the information actually comes from the financial audit currently being performed by Monty Schultz. Mr. Schultz typically completes the financial portion of this report for us. This report is due by March 31, 2011. I do not anticipate any problems with completing this report on time.

**Annual CDPH Report:** The State of California is again changing their report forms as they did last year. Because of this, I do not currently have a date that the forms will be ready or the due date of this report. However, through email yesterday with CDPH, I was informed that they hope to have the forms ready by March 15<sup>th</sup>. Typically this report is due by March 31<sup>st</sup>. However, due to the delays caused by the form changes last year, we were given until June since the report forms were not available until May.

**Equipment (New Hand Tools):** No new information to report at this time.

**Compliance Testing:** All compliance sampling for 2011 is currently up to date. There is no compliance sampling due at this time.

**Main Replacement Areas for 2011:** No new information to report at this time.

**Hydrant Inspection / Maintenance Program:** The hydrant inspections for February and March have been completed on time.

**Inventory Control Program:** No new information to report at this time.

**Corrections Regarding Meters at the MTBE Plant:** As stated earlier, we experienced problems in the backwashing of the carbon vessels. This has delayed the normal operation of the treatment plant which are necessary for me to perform the final tests on the existing meter at Well 40A. I am anticipating the return of normal operations by March 16<sup>th</sup>.

After the MTBE plant is back in operation we will perform the additional tests to ensure meter function and accuracy. We will then move forward on either repair or replacement of the meter. At that point I will then finalize the spreadsheet to the best that we will be able to obtain and make this information available.

**Administrative:** I have been fitting in where I have a little time the creation of some "tools" to help manage the system operations. These tools include the creation of a chart that looks at the costs to supply treatment chemicals and electric power to each well individually versus the amount of water they provide for these costs. These are the three costs that we can easily track so they are the only ones used in this chart. Costs such as employee labor, vehicle costs etc. would be too difficult to include would be fairly consistent from well to well. Our staff can now use this chart to see what well would be best to operate when the situation arises and there is an option of more than one well to choose from.

## March 2011 YLOA/YSPUC GM Report, as of 3/17/2011

“Well Cards” will be placed at each well, containing the well identifier, the chlorine residual range and sequestering agent residual range for that well and a place to record chemical feed pump settings. These cards are laminated and grease pencils will be placed with the cards so some operators can make notes on the laminated cards and still have the ability to erase and change information as necessary. The lamination will also make these cards weather resistant.

I have also created a spreadsheet to plan for the amount of sequestering chemicals needed throughout the years in a much more efficient manner. I plan to expand this spreadsheet to include chlorine needs as well as power. This tool should help in the budgeting process each year.

### Safety Planning:

Cal OSHA bulletins and posters are in place. The Injury/Illness Prevention Program document was reviewed in 2010 and is in place. The Disaster/Emergency Action Plan has been updated for One-Call-Now inputs and elements; R3 is in final review. The Employee Handbook is also in review by management to assimilate relevant safety guidelines into our current operations.

We are generating a Scope of Work for a YSPUC Safety Coordinator, who will work in conjunction with the YLOA Safety Officer to ensure compliance with local, state and federal regulations. Once this scope of work is completed, we will review with YSPUC President for his concurrence to proceed with the resource search as applicable. Work vehicles are in the process of being outfitted with relevant operational documents to assist supervision in this endeavor.

### Security/Safety *(written by Joseph Shreve)*

The daily report summary covers the period of February 9 through March 8 2011.

Reporting period	House checks
Jan 26 – Feb 1	77 checks
Feb 2 – Feb 8	70 checks
Feb 9 – Feb 15	110 checks
Feb 23 – Mar 1	88 checks
Mar 2 – Mar 8	56 checks

	11/12/10 12/16/10	12/17/10 1/13/11	1/14/11 2/10/11	2/11/11 3/10/11
<b>Criminal</b>	1	3	3	0
<b>House Checks</b>	383	339	301	395
<b>Association Requests for Service</b>	165	144	145	145
<b>Sheriff</b>	0	2	2	5
<b>Fire/Med</b>	7	8	3	4
<b>Calls For Service</b>	161	125	108	139
<b>Total</b>	717	621	562	688

### Daily Summary:

February 9:

- Afternoon: the guard took information on a missing banner from the Parkway.

## March 2011 YLOA/YSPUC GM Report, as of 3/17/2011

- Afternoon: the guard responded to a loose cattle complaint in the Long Hollow area. They were gone when she arrived.
- Afternoon: the guard took possession of a found cell phone. She was able to return it to its owner.

February 10:

- Afternoon: Mr. Shreve took information on a prior paint balling incident at a residence on the Parkway.
- Afternoon: the guard assisted the Madera County Animal Control on an assignment.
- Afternoon: the guard received a report of loose cattle in the Long Hollow area. The rancher was notified.
- Afternoon: the guard received a report of a stop sign that had been altered. Photos were taken and the report was turned over to the Road Department.
- Afternoon: the guard received a report of a family disturbance in progress. The call was turned over to the Sheriff.

February 11:

- Afternoon: the guard and Mr. Shreve removed a dead deer from the Blue Heron Lake trail. The animal was given to a biologist from the Fisher Project/Sierra Nevada, for scientific study.
- Afternoon: the guard took a report of a domestic cat that had been shot and wounded with a pellet gun in the center area.
- Afternoon: the guard and Mr. Shreve responded to a report of a mountain lion at a residence in the North Dome area. The cat was gone when they arrived.
- Evening: the guard responded to a residence in the center area regarding a report of a prowler allegedly trying to get in. The person was gone when she arrived.

February 12:

- Early morning: the guard responded to the North Dome area on a report of suspicious juvenile activity. It checked ok.
- Morning: the guard responded to a report of a dead dog on the Parkway in the south area. There were no tags or collar on the dog. The guard removed the dog.
- Evening: the owners of the dog mentioned above called to report the dog missing. The dog was returned to the owners for burial.
- Evening: at a house check the guard found an open door. The resident was contacted. It checked ok.

February 13:

- Morning: the guard responded to the center area on a report of aggressive dogs. The sheriff also responded per the guard's request. The sheriff had Animal Control respond, and resolved the issue.
- Afternoon: on patrol the guard found a valley quail that had been shot and killed. He removed it. (It is not quail season).

February 14:

- Afternoon: the guard took information on a found dog.

February 15:

- Afternoon: the guard responded to a complaint of people selling or giving away puppies on the complainant's property. The guard confirmed this and had the person leave.
- Afternoon: the guard found a loose dog in the center area. The owner was known and contacted. She came and recovered her dog.

February 16:

- Afternoon: the guard took information on lost property.
- Evening: the guard responded to a report of a suspicious vehicle near the tennis courts. It checked ok.

February 17:

- Afternoon: the guard responded to a center area residence regarding an open door. It checked ok.
- Afternoon: the guard took information on a suspicious vehicle from the previous evening in the Revis Mountain area.

## March 2011 YLOA/YSPUC GM Report, as of 3/17/2011

- Evening: the guard responded to the north area on a report of 2 suspicious vehicles. They were gone when she arrived.

### February 18:

- Afternoon: the guard conducted a welfare check on a resident at the request of an out of area person. The person she checked on checked ok.
- Afternoon: the guard conducted follow-up on a prior suspicious vehicle call.
- Evening: the guard responded to the Long Hollow area on a report of an open door at a vacant residence. The sheriff also responded. The residence checked ok.

### February 19:

- Morning: on patrol the guard came across loose cattle on Long Hollow Drive. The rancher was notified and he responded.
- Morning: the guard responded to a call of a dog bite at a residence in the center area. The victim wasn't hurt. The owner of the dog was contacted, a report was written, Animal Control was notified, and the report was submitted to ECC for follow-up.
- Morning: on patrol in the center area the guard checked a suspicious person. He checked ok (painting contractor).
- Afternoon: the guard was flagged down by a resident reporting a suspicious vehicle that had just left the area. She found the car unoccupied at a local business. Information on the vehicle was obtained for future reference if needed.
- Evening: the guard conducted follow-up on a prior suspicious vehicle call.
- Evening: the guard checked a suspicious person on the Parkway. This individual checked ok.

### February 20:

- Early morning: the guard responded to a report of a stranded motorist on the Parkway. The car was gone when she arrived.
- Morning: on patrol in the center area the guard came across a loose dog in the roadway. The dog had a collar with tags. The guard called the owner. He responded and took his dog home.

### February 21:

- Afternoon: the guard responded to a report of a deer that allegedly had been hit by a car and injured in the north area. He was unable to locate the deer.
- Afternoon: the guard responded to an alarm trip at a YLOA facility. It checked ok.
- Evening: the guard responded to a barking dog complaint in the Revis Mountain area. He was unable to locate any barking dog at the area provided.
- Evening: the guard was flagged down in the Revis Mountain area regarding a juvenile being detained by a resident for ringing doorbells and then fleeing. The guard took the juvenile home and notified the parents.

### February 22:

- Afternoon: the guard responded to a suspicious vehicle call at a residence in the Revis Mountain area. It was gone when he arrived.
- Evening: the guard responded to a loud music complaint in the North Dome area. The resident was contacted and agreed to turn down the music.

### February 23:

- Afternoon: the guard took information on a minor vandalism at the recreation center.
- Afternoon: the guard responded to a residential alarm call in the North Dome area. It checked ok.
- Evening: the guard responded to a barking dog complaint in the Revis Mountain area.
- Evening: the guard took possession of a found license plate. It will be turned over to the CHP.

### February 24:

- Afternoon: the guard responded to a loose dog complaint in the Revis Mountain area. The dog was gone when she arrived.
- Afternoon: the guard conducted a resident assist for an elderly resident in the center area.

## March 2011 YLOA/YSPUC GM Report, as of 3/17/2011

- Evening: the guard responded to a suspicious vehicle call in the center area. The vehicle was gone when she arrived.
- Evening: on patrol the guard checked a suspicious person on the Parkway. This person checked ok.
- Evening: the guard and the sheriff responded to the center area on a report of an alleged prowler in the resident's garage. This person was gone when they arrived.

February 25:

- Afternoon: the guard took information on lost property.
- Evening: the guard responded to the Parkway on a report of a large pot hole. After consultation with the Roads Department supervisor, she properly signed the area to warn motorists of the hole. The road department later patched the hole.

February 26:

- Evening: the guard assisted a disabled motorist at the clubhouse.

February 27:

- Early morning: the guard removed a rockslide on the road in the center area.
- Afternoon: the guard received a report of a domestic fight occurring on the street in the center area. He turned the call over to the sheriff.
- Afternoon: the guard received information on an incident occurring early that morning in the North Dome area.
- Afternoon: the guard took a report of a residential burglary that had occurred on the 24<sup>th</sup> at a residence in the center area. The sheriff had already taken a report.
- Evening: the guard responded to the north area on a report of a barking dog.
- Evening: the guard checked a suspicious vehicle at a local business. It checked ok.

February 28:

- Afternoon: the guard conducted a resident assist at the clubhouse.
- Afternoon: the guard conducted another resident assist at the clubhouse.

March 1:

- Afternoon: the guard responded to a fire pager call of a medical emergency in the north area. He arrived and marked the location for responding EMS personnel.
- Evening: the guard conducted a citizen assist at the clubhouse.

March 2:

- Afternoon: the guard responded to a call of people golfing on the baseball field and the golf balls were hitting the snack shack. She responded and had them cease.
- Evening: the guard had a clubhouse patron remove his vehicle from the fire lane.
- Evening: the guard assisted a disabled motorist on the Parkway.
- Evening: the guard responded to a suspicious vehicle call at the boat ramp. It checked ok.

March 3:

- Afternoon: the guard took information on 2 lost dogs from the Long Hollow area.
- Evening: the guard responded to a suspicious vehicle call at the golf course. It was gone when she arrived.
- Evening: the guard responded to a fire pager call of a medical emergency in the south area. She arrived and marked the location for responding EMS personnel.

March 4:

- Afternoon: the guard took a report of a theft of a ladder from a residence in the Revis Mountain area.
- Afternoon: the guard responded to a report of loose dogs in the north area. They were gone when she arrived.
- Afternoon: the guard responded to a report of people drinking at the recreation center. They checked ok.

## March 2011 YLOA/YSPUC GM Report, as of 3/17/2011

- Afternoon: the guard received a report of a go-cart on the Blue Heron Trail. It was gone when she arrived.
- Evening: the guard found a loose dog at the clubhouse. She knew its owner and took it home.

March 5:

- Early morning: the guard checked a suspicious vehicle in the center area. It checked ok.
- Afternoon: the guard responded to a report of people with BB guns in the south area. She contacted them and had the BB guns put away.
- Evening: the guard responded to the north area on a report of strange noises at a house. It checked ok.
- Evening: the guard responded to the center area on a report of an alleged theft of gas.

March 6:

- Morning: the guard responded to a fire pager call of a medical emergency in the south area. He arrived and marked the location for responding EMS personnel.
- Afternoon: the guard responded to a shots fired call in the North Dome area. It was coming from the bordering ranch.

March 7:

- Afternoon: the guard responded to a barking dog complaint in the North Dome area.
- Evening: the guard responded to a loud music complaint in the North Dome area.

March 8:

- No calls for service.

### Wildlife Report:

A very large wild pig was spotted in the evening in the Long Hollow/Sequoia Court area. There were no significant sightings or wildlife movement during this reporting period. Deer still stand close and cross the road on Corral and the Parkway during the twilight/early evening hours.

### Joseph's Safety and Security Corner:

As usual for this time of year we have been getting several calls and/or coming across cattle in the road and on resident's property in the Long Hollow area. This is usually caused by the wet ground; the wild pigs rooting around the fence line on the southern border of YLP and knocking down the fence, and in come the cattle. The rancher who owns the cattle is very diligent in rounding up the loose cattle and keeping the fence in as good of repair as the wild pigs will allow. But the cattle will get in occasionally. Please be careful driving on Long Hollow. Cattle can weigh in at as much as 1,500 pounds. Hitting one of them can cause serious injury to you and severely damage your vehicle.

The prowler and burglary calls this period should remind us that we need to be vigilant and report suspicious activity immediately to the sheriff and security. Locking your cars and houses at night is always a good idea. Again we are asking residents to report suspicious activity to the sheriff and/or security. The perpetrators are been seen by residents. Please report anything that looks suspicious. Don't fall into the "well it's probably nothing" syndrome. If it raised your attention it needs to be looked into.

---

Michael R. Neveu, *MBA, CMCA*, General Manager, Yosemite Lakes Owners' Association  
© Copyright 2011, Yosemite Lakes Owners' Association, all rights reserved